

# Quick start UMKa312

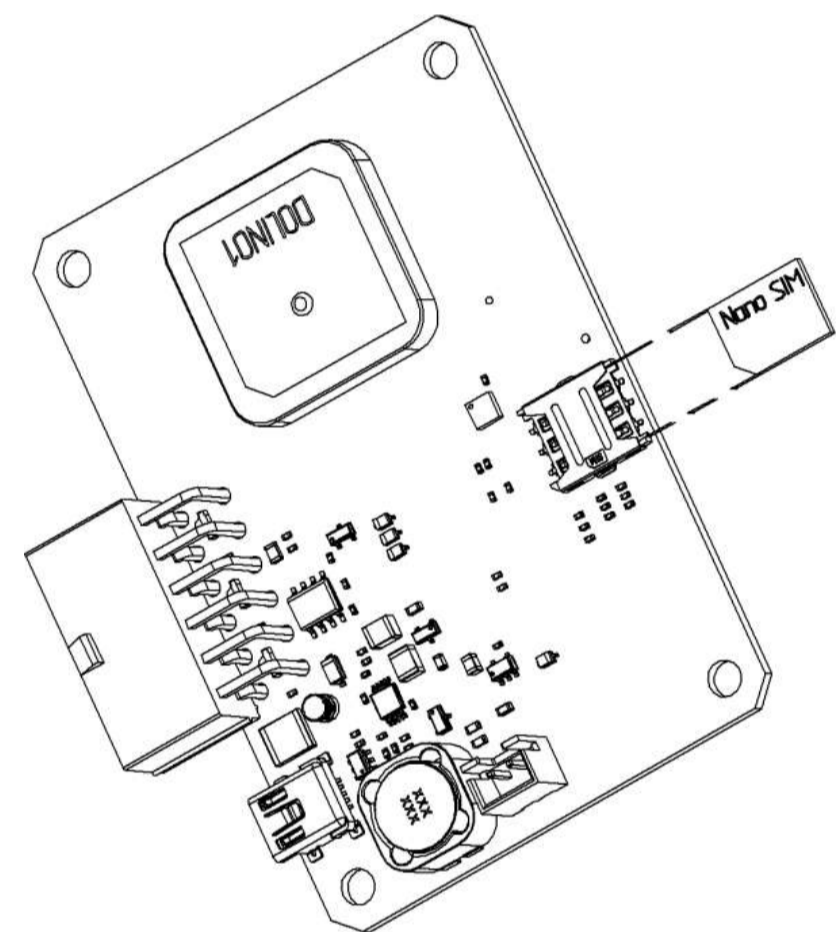
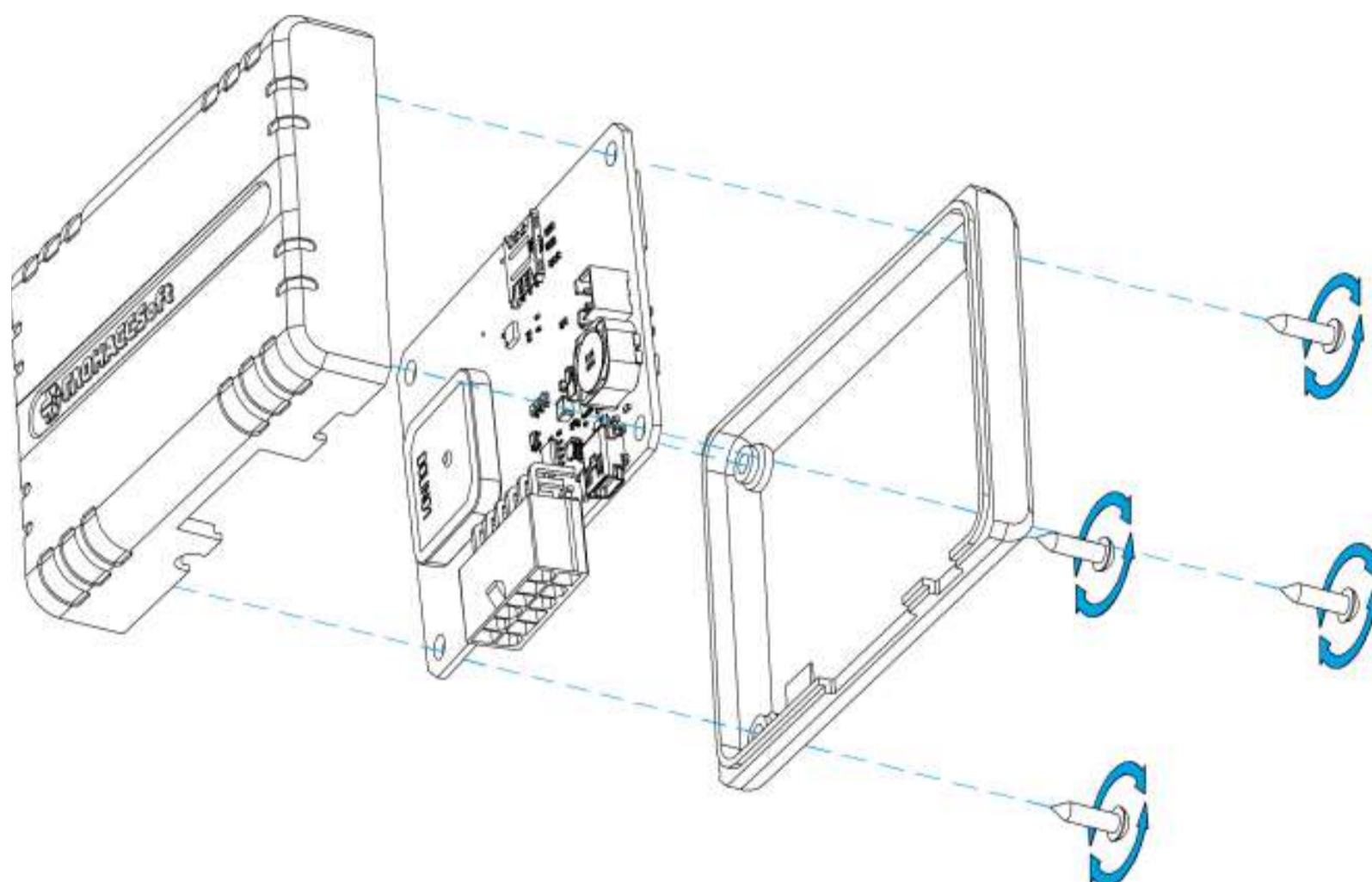


To connect the tracker it is recommended to execute the following instructions:

## 1. SIM card installation into a gps tracker

In order to do it, open the tracker casing by unscrewing beforehand the fixing screws with PH 1 cross-head driver and take the board out.

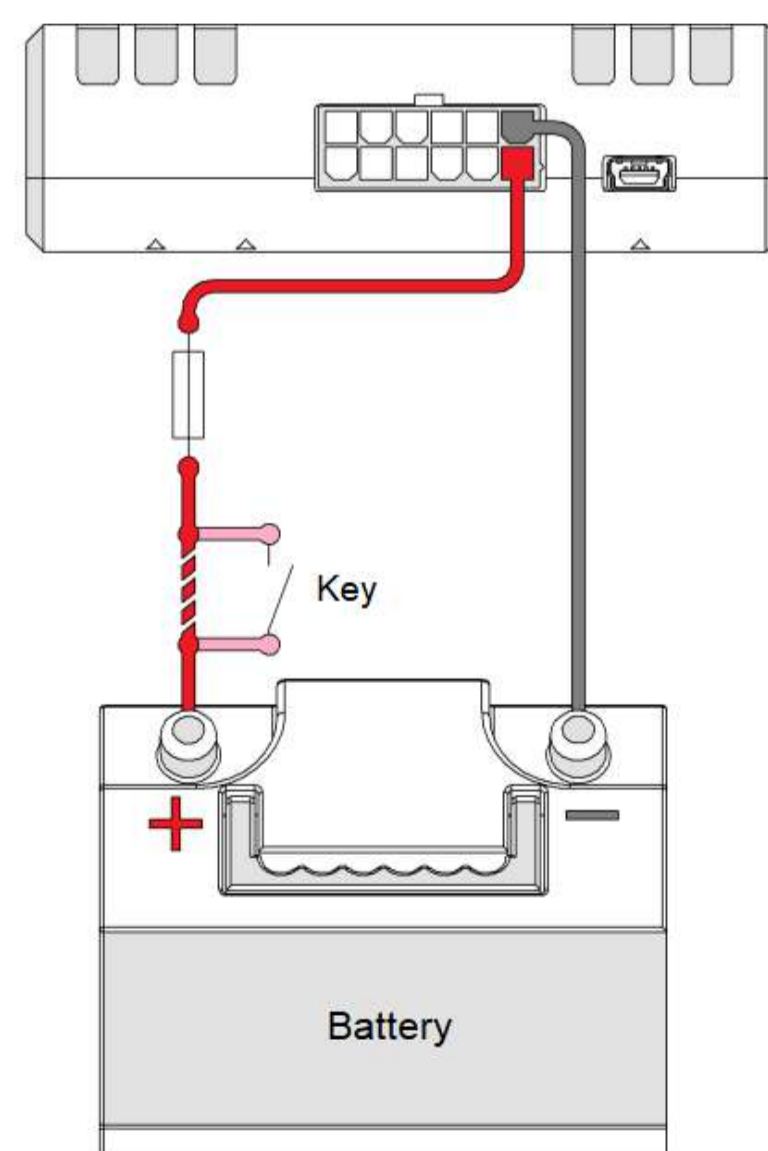
Then install the SIM card.



## 2. Connection of power supply

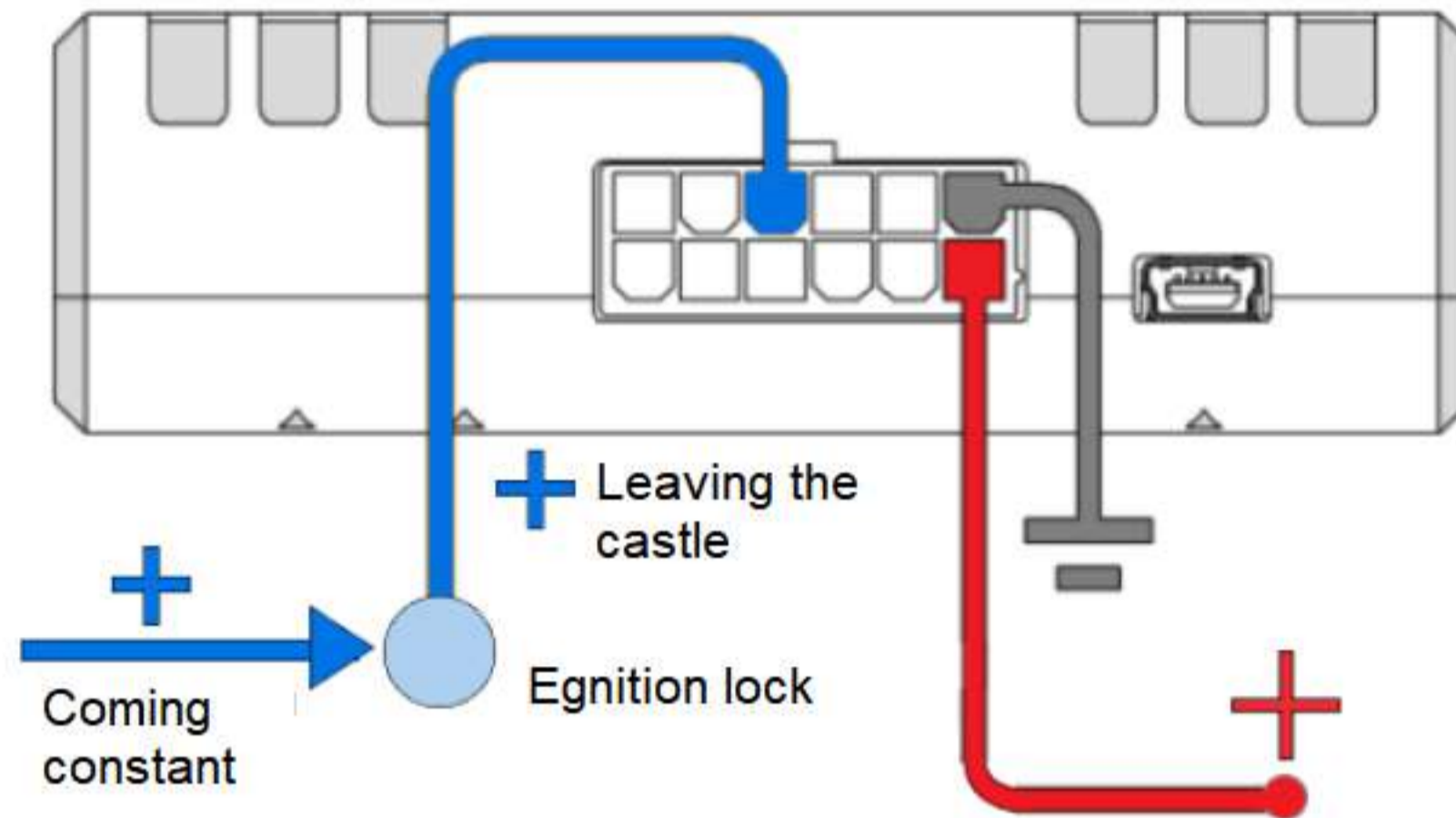
The power supply of the built-in battery and connection via USB is not enough to start the network module and navigation. For this reason it is required to connect the device to the power supply with voltage more than 12V in order to enable all modules of the tracker. Also it is vital for the tracker to connect to the server and send packages.

UMKa312 has a slot for connecting the power supply and various sensors. It has pinout 1 (red VDC) and pinout 7 (black Ground) for power supply.



### 3. Connecting the ignition sensor

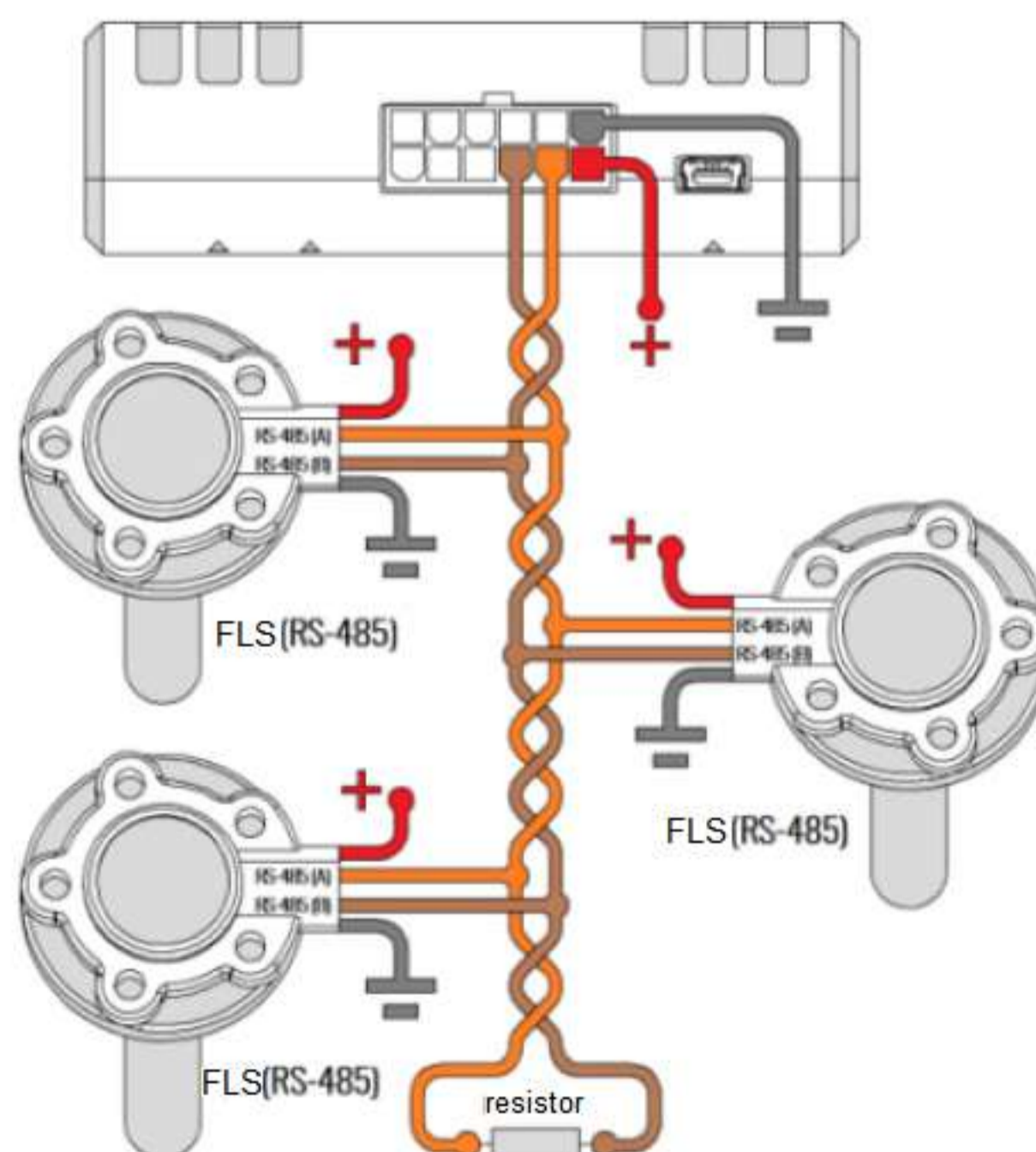
To connect the ignition sensor, it is necessary to connect the blue wire (discrete input-output) to the outgoing positive wire after the ignition switch.



### 4. FLS connection

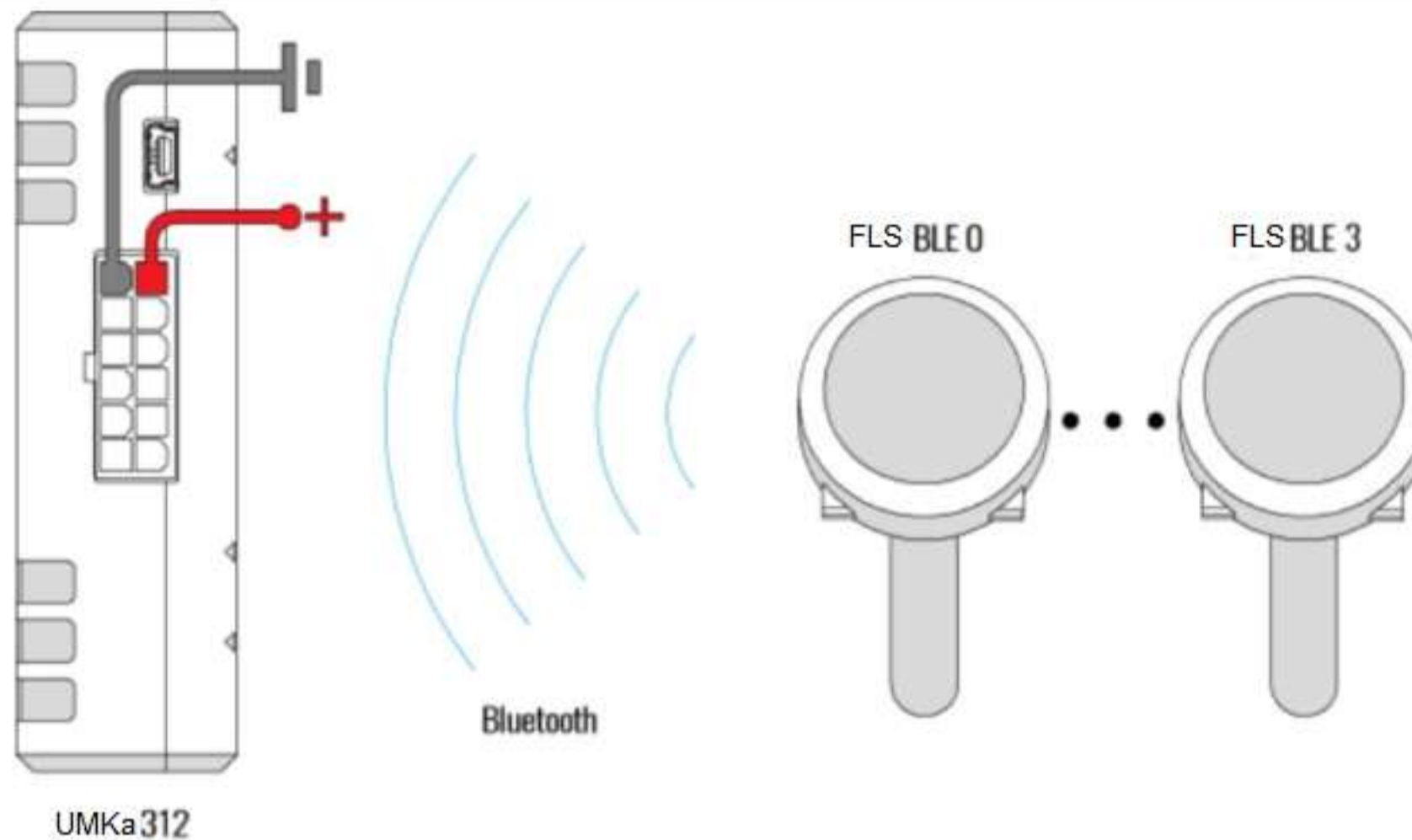
#### RS-485

Up to 3 fuel level sensors (FLS) with LLS protocol can be simultaneously connected to the tracker via RS-485 interface. The resistor at the end of the bus is set to match the wave impedance and is equal to 120 ohms. It is recommended to use the RS-485 bus with a twisted-pair cable. The stubs from the RS-485 bus to the sensors should be as short as possible to match the bus impedance. And to prevent collisions on the bus, it is recommended to pre-assign a unique address to each device.

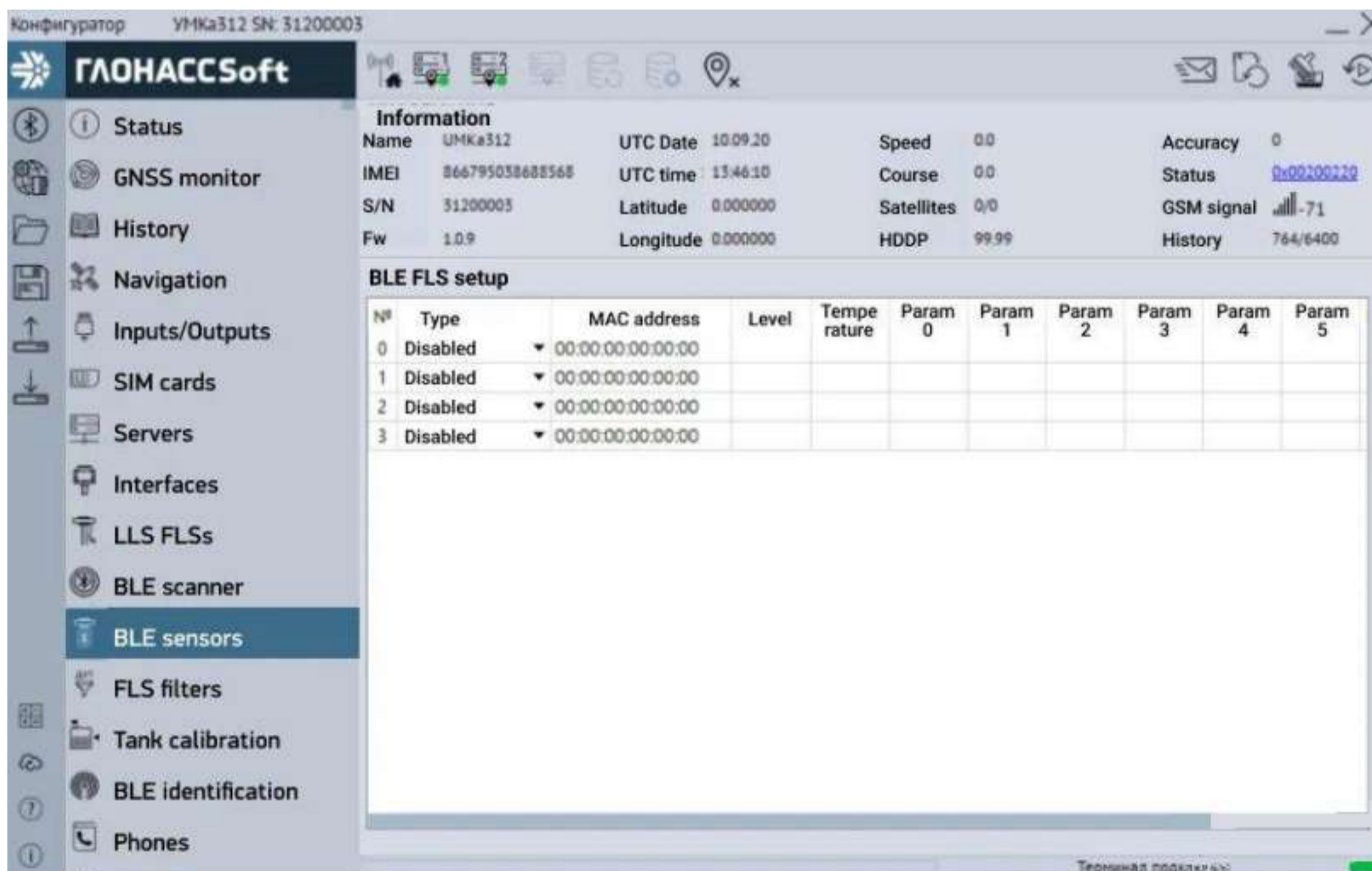


## Connecting FLS BLE

In addition to wired FLS, up to 4 wireless FLS can be connected. To start working with BLE FLS, go to the "System" tab in the configurator and in the "Bluetooth Settings" group of parameters, select "BLE FLS" (BLEMODE 2) or "Configuration and BLE FLS" (BLEMODE 3) from the drop-down window. Then write the configuration to the tracker.



To add FLS to the tracker, on the "BLE FLS" tab, enter the MAC address in the appropriate field or use the "LLSBLEn" command. To start receiving data, check the "Poll" box. To obtain the MAC address of the device, the configurator provides a BLE scanner. Click on "Search Device". The tracker will find all available Bluetooth. Right-click on the required device and select the number in the window that appears.



Indications of wireless FLS are integrated into the common address space after 3 wired FLS. Wireless FLS addressing starts from 7. For wireless FLS, the Status tab displays information about the supply voltage and signal level. Also, the signal level and supply voltage are written in a black box and can be read by the configurator when unloading the history.

### 3. Installing UMKA3XX configurator on PC

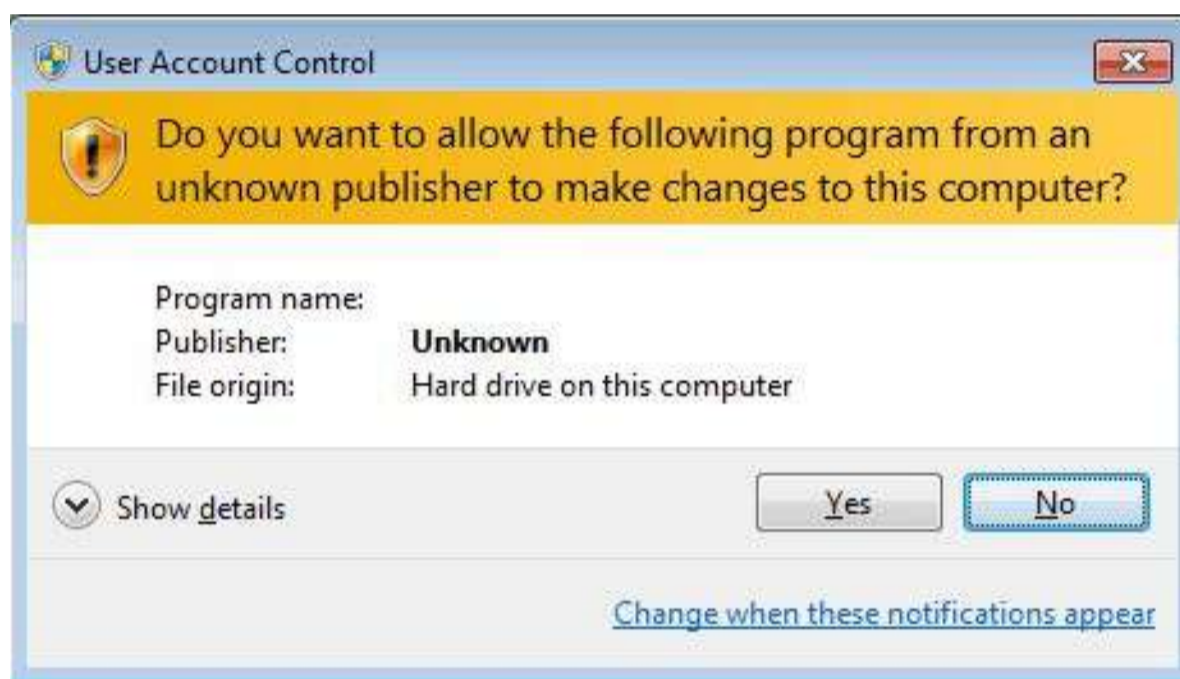
In order to configure the tracker, use a personal computer with minimum Windows 7 operating system support.

To download configurator UMKa3XX follow the links below:

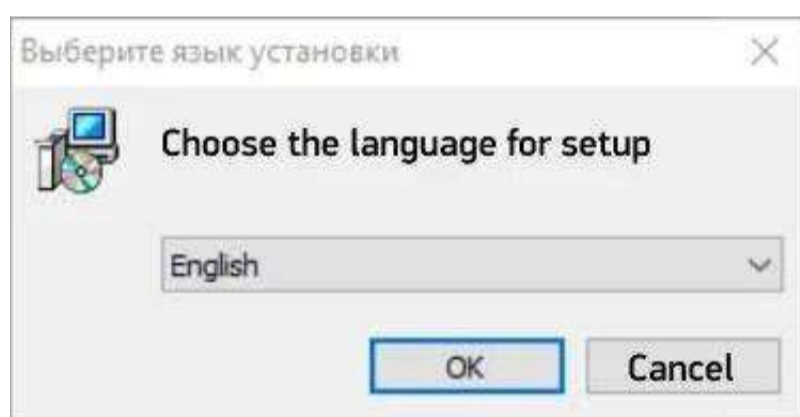
[DOWNLOAD \(Desktop version\)](#)

[Google Play \(Android\)](#)

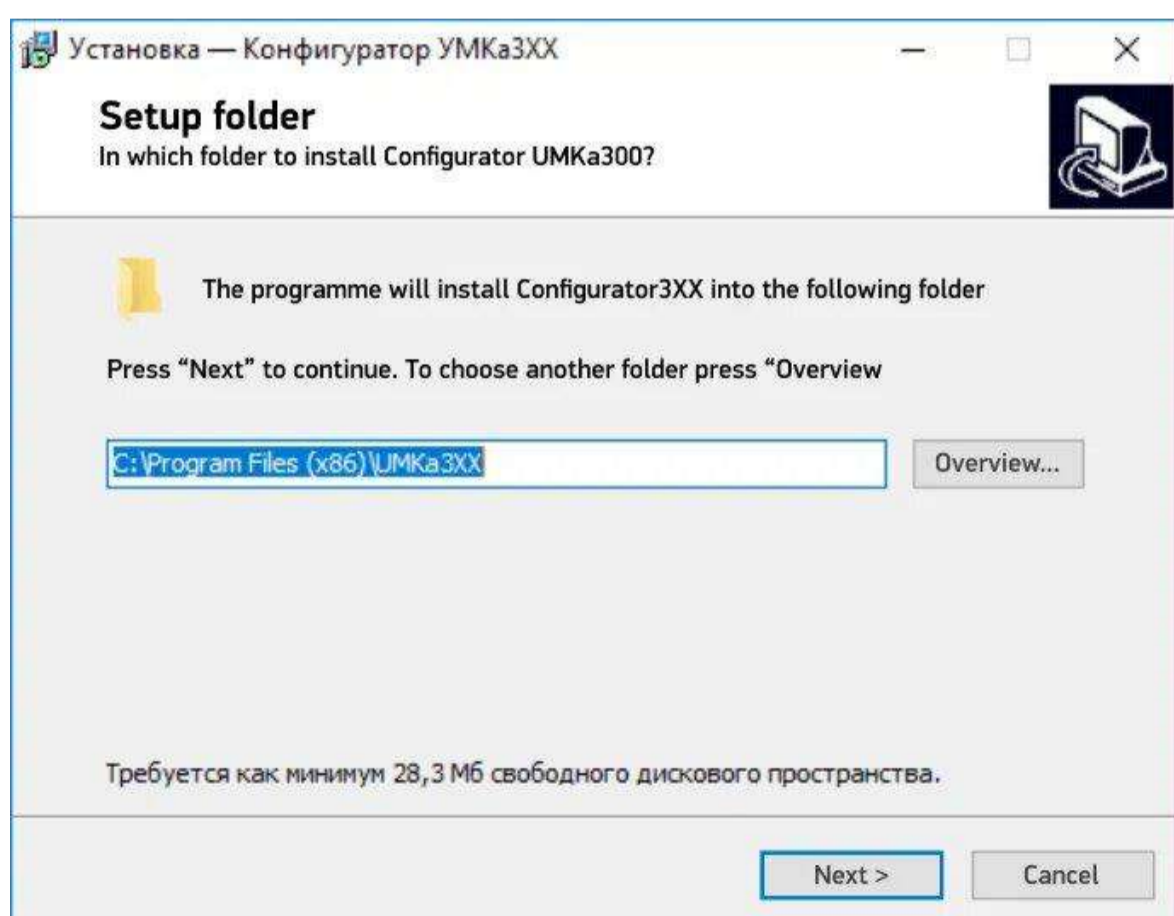
**01** To launch installation, start the downloaded file and allow it to make changes.



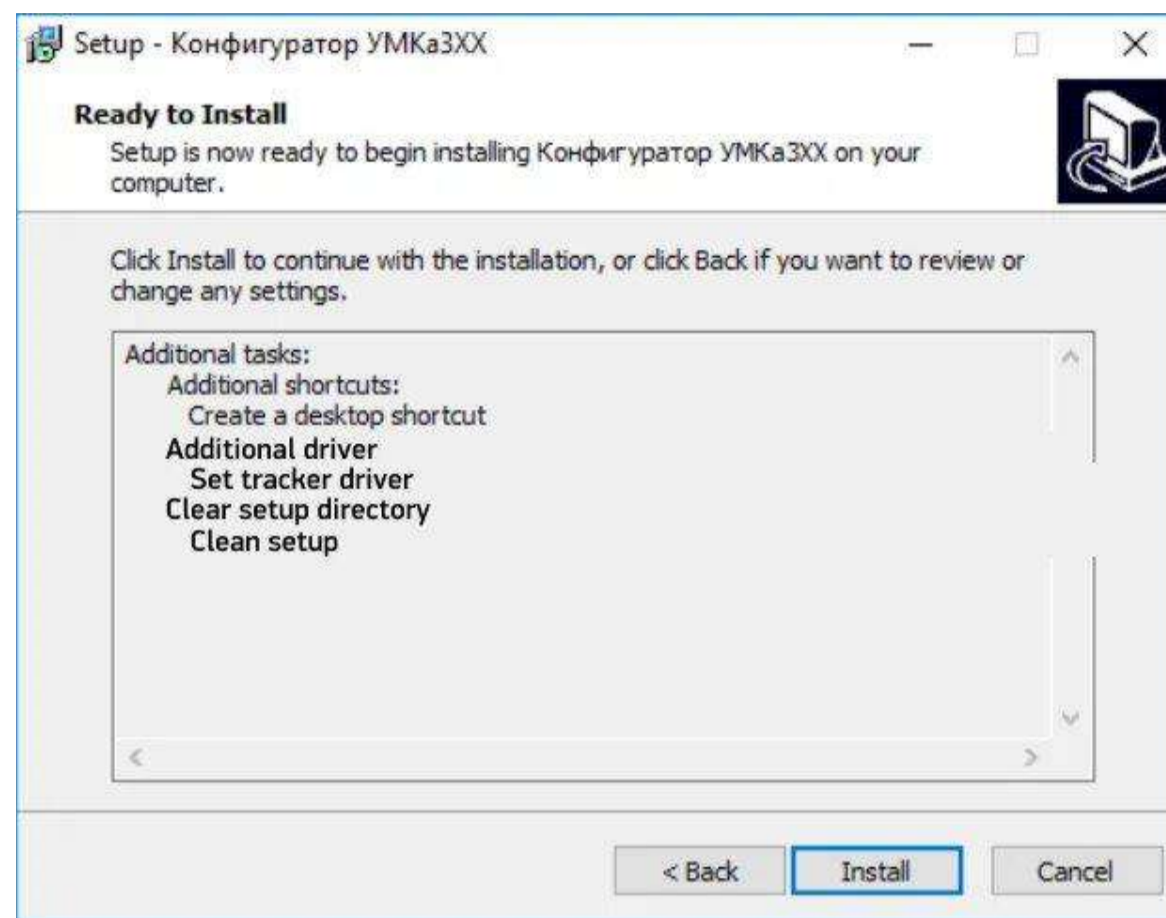
**02** Choose language and press OK.



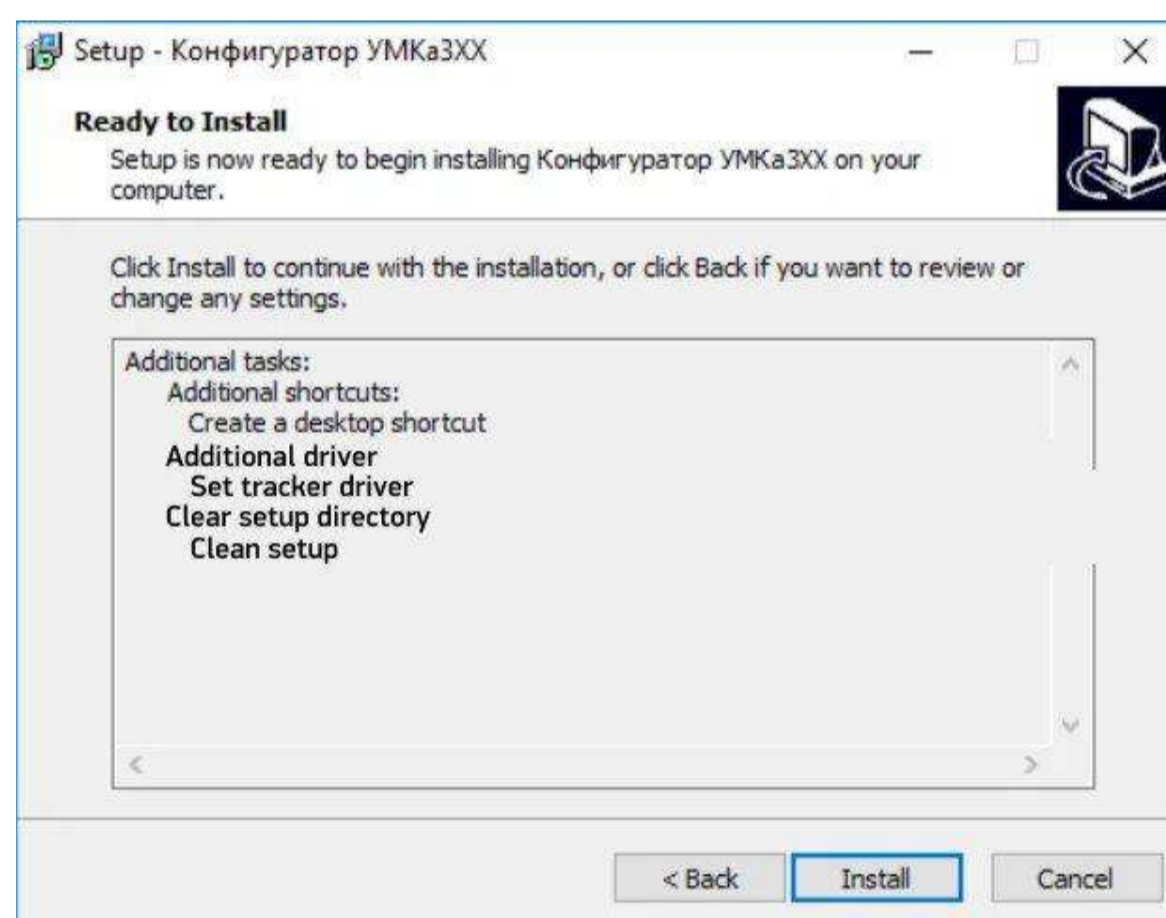
**03** Choose the way to install the software and press "Next".



**04** During the first installation choose "Install the tracker driver" and press "Next".



**05** The programme is ready for installation, press the button "Install".

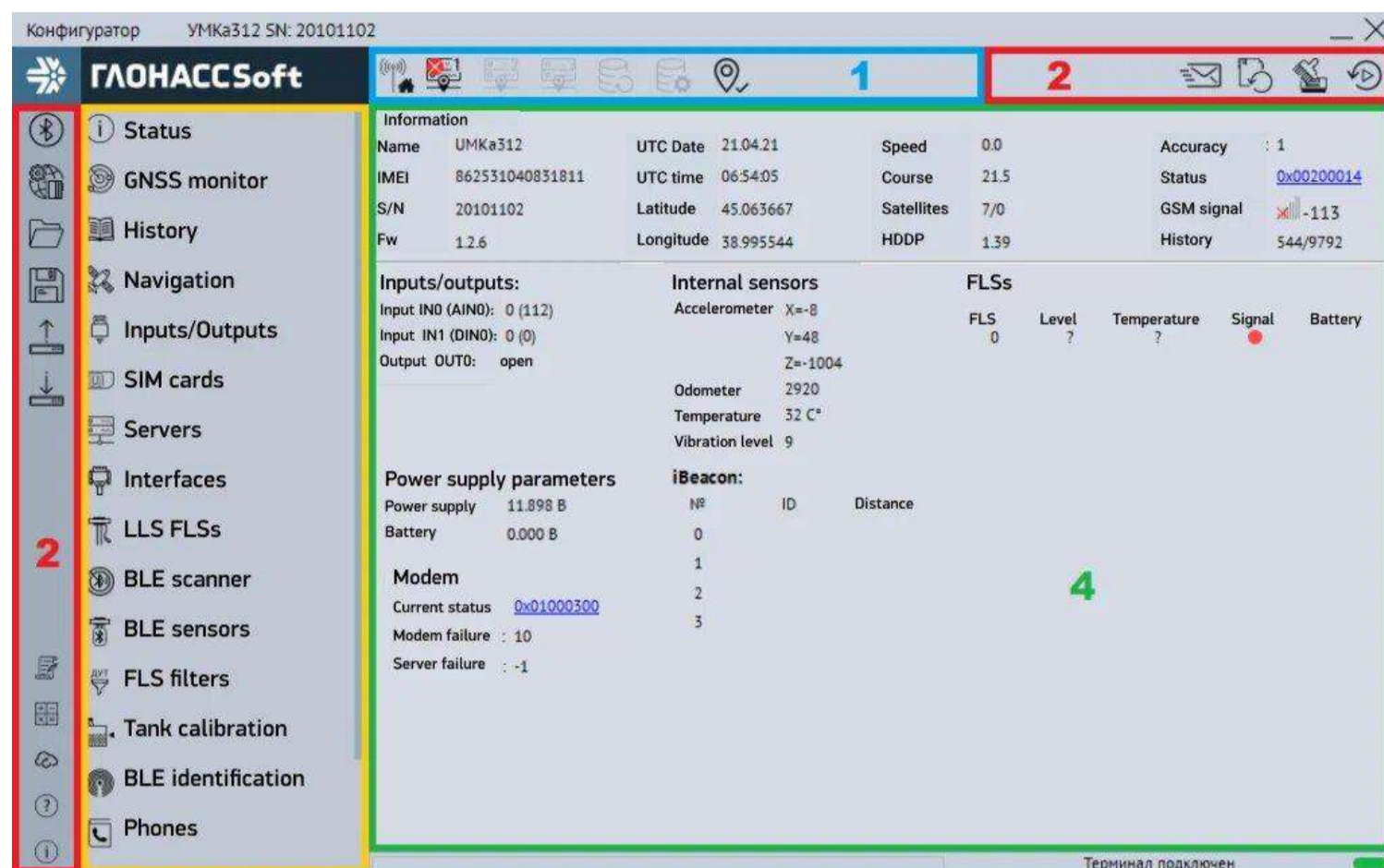


**06** After completing the installation start configurator by choosing the option "Launch UMKa3XX configurator".



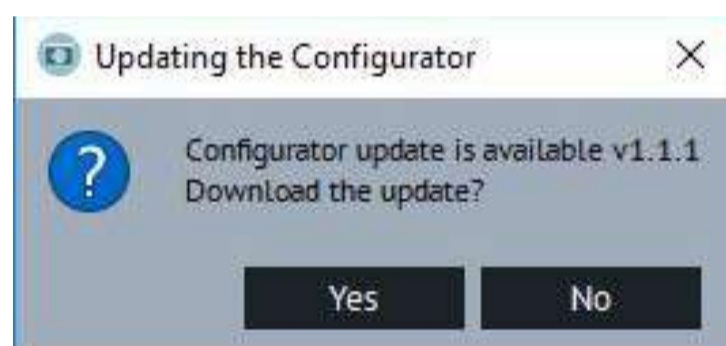
## 4. Start and connection of a tracker to PC

To start the application go to “Start” → “All programs→ “UMKa3XX configurator”. The start window will pop up. It has 4 zones:



1. Status panel
2. Tools panel
3. Settings tree
4. Info display window


When launching, the configurator connects to the updates server and checks their availability for the tracker firmware. In case the update of the configurator is available, the window with the info of the update will appear.



To download the update, press “Yes”

The update will be downloaded and installed automatically and after this the program will be refreshed.

### Connecting the tracker

To connect UMKa312, use a USB A - a mini-B wire or a BLE connection. To connect the tracker via BLE press the button “Remote configuration” in upper left part , and next in the dialogue window type the IMEI and password of the tracker. Then press “Connect”.

## 5. Configuration of server

To configure the connection with the server use the tab “Servers” where the IP address, port and domain of the monitoring system must be specified.



After that, write the configuration into the tracker with the button:



## 6. Installing the tracker into the vehicle

When installing the tracker, it is necessary to take into account its positioning. It is important for the GPS antenna to be forwarded upwards (with inscription GLONASSSoft upwards).

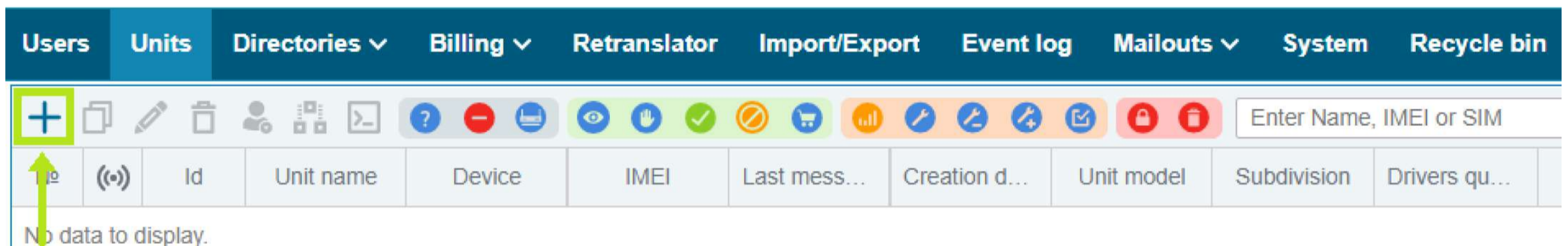
Then give the tracker a few minutes to connect to the updates server. It is desirable to locate it in the open place far from any metal items for a better connection via GSM channel and satellite visibility.

All connections must be done with the help of plastic ties for the wire or with special counterpart of connectors for wires.



## 7. Adding a unit on the server and binding IMEI of the tracker

To add a new unit, go to your account on GLONASSSoft platform. In the control panel go to “Units” module and press the icon “Add”.



In a pop-up window (unit’s card) fill in the following data:

1. Unit’s name.
2. IMEI (identification with which the clarification of the tracker by the platform is executed).
3. Device type (the server will be automatically bound after choosing the device type).
4. Unit’s model (specify an already existing one or create a new one).
5. Subdivision (not obligatory but necessary for further filtration and grouping of the units).
6. Telephones SIM1 and SIM2 (not obligatory).

**Thanks to all above described steps you will be able to quickly connect the tracker!**