

NEW

# UMKa303

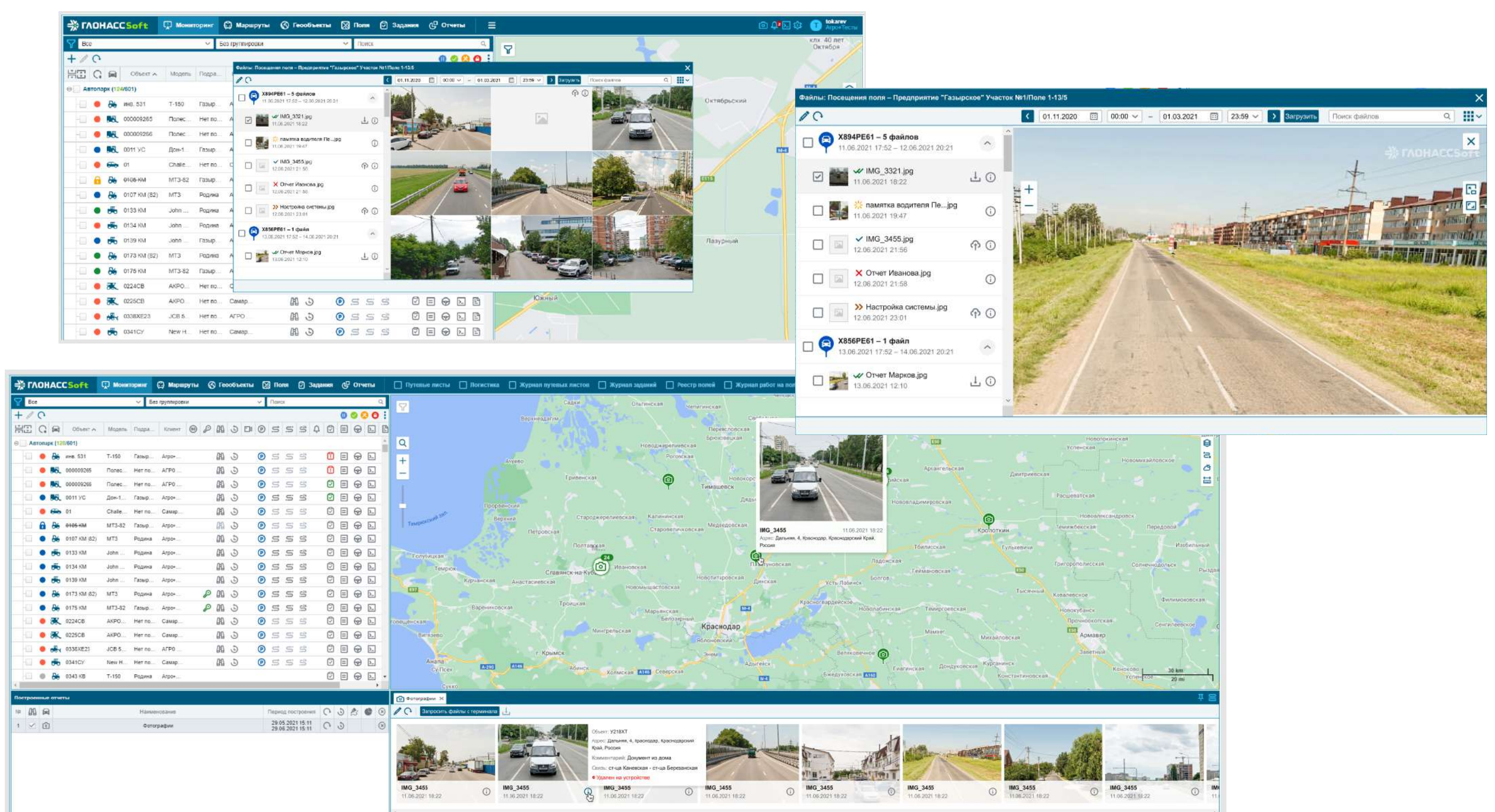
VISUAL CONTROL  
IN GLONASSSOFT

## Main advantages :

- ✓ Event-driven model of photo sending - only necessary shots
- ✓ Connection of up to 3 cameras ( 2 analog and 1 via RS-232/485)
- ✓ Energy consumption control due to the built-in battery
- ✓ The opportunity to record photos onto a SD card and transmit it according to event/request
- ✓ Easy search of photos due to an identifier
- ✓ Low level of traffic consumption - the photo is only 150 kb
- ✓ The opportunity to store photos on the tracker, in the system or on your server
- ✓ The set of options for advanced tracker (CAN, BLE, MyLogic)
- ✓ Cost-efficient offer for the equipment set



## Visual control in GLONASSSoft





## Technical characteristics:

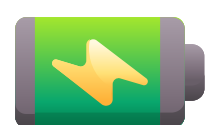
- Connection of any analog cameras with PAL standard
- 2 SIM cards - a new robust holder will allow to save in roaming
- CAN - support of the protocol J1939 and user filters
- 4 digital inputs working on + and - for flexible connection of equipment
- RS-485 - connection of up to 7 FLSs, up to 4 RFID readers, etc.
- 1-Wire - connection of up to 4 temperature sensors, using of iButton keys
- Micro SD (optional) - to increase the volume of navigation data recording
- Support of the most popular tachographs
- Interaction via Modbus, the most famous industry protocol
- iBeacon support - BLE identification system
- USB connector - for PC connection and the terminal setup
- Li-on battery - stand-by power supply battery 1100 mAh
- Case opening sensor - installed in all models
- RS-232 (optional) - for connecting FLSs, Trimble, CAN-LOG



**CAN**



**Modbus**



Li-ion



iBeacon

**MyL<g>ic**

## Application range

### Multiple road maintenance vehicle



The driver and road recording  
The sweeper and spreader control

### Fuelling tanker



Multi-focus shooting of fuelling vehicle  
Photo recording of the turning on and off of the water pump and signal pick up device

### Asphalt spreader



Assessment of the road paving quality  
The setup of photo sending on prioritized episodes

### Tractor



Analysis of the tractor's operation (depth, skips, overlapping)  
Opportunity to attach a trailer/item for operation control

### Logistics



Recording of products, discharge and door opening on every stop  
Control and prevention of cargo theft

### Excavator



Control of performed jobs  
Visual control of fuel tank

# Compatible cameras with UMKa303

You can obtain already compiled set of UMKa303 + 1 or 2 cameras or choose any analog camera with PAL standard



There are only a few models available on the market:



Dome



Bullet



Mirror built-in



Automobile



Panoramic



With backlight



Traffic



Varifocal



Number plate frame  
built-in

A dome video camera HDCVI EZ with fixed objective lens is automatically included into the set with UMKa303.